

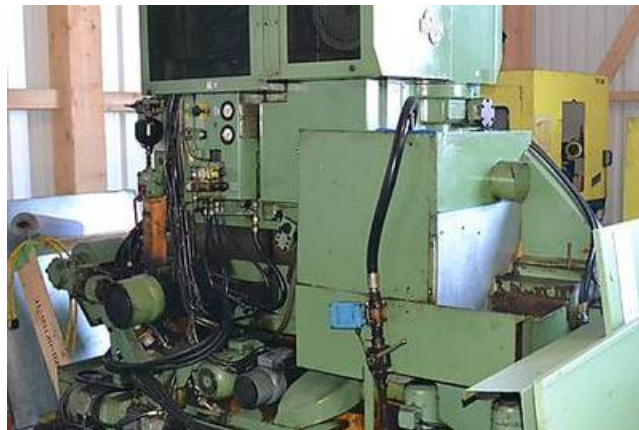
KUNARK HITECH MACHINING & SALES PVT.LTD.

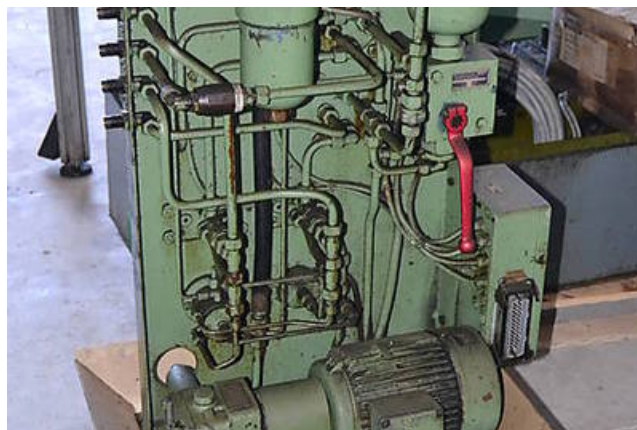
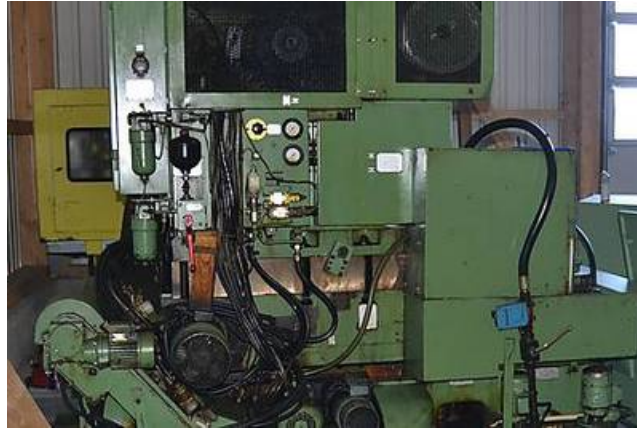
Kunark House, 269, Kunark Marg, Kaman Bhiwandi Road, Kaman,

Vasai Road (East), Dist: Thane -401208, Maharashtra, India.

Mobile: (+91) 9867973046 Factory: 0250-6454895

Email: info@jkgears.com, dalbirbright@gmail.com website: www.jkgears.com







Machine Id	:- 940	Serial No	:-
Category	:- Gear Related Machines	Model	:- LS 150
Country	:- Germany	Make	:- Lorenz
Type of Machine	:- high speed production gear shaper with tailstock	Year	:- 1990
Weight	:- 0.0	Dimensions	:-
Power	:-	Location	:-

Specification :-

External gears, max. Ø	150 mm
Gear width, max.	42 mm
Module, max.	3
Internal gears, max. Ø	60 + cutter Ø mm
Internal gears, max. workpiece Ø, approx.	280 mm
Length of stroke	0 –50 mm
Adjustment of stroke	0 –70 mm
No. of double strokes per minute, approx.	355 / 375 / 400 / 1,060 / 1,120 / 1,200
Radial feed, infinitely variable	2.65 –100 mm/min
Shaping feed	160 –6,500 mm/min
Table size	250 mm
Table bore	100 mm
Distance between table and shaper head, approx.	265 mm
Total electrical load, approx.	25 kW - 380 V - 50 Hz
Weight	6,500 kg