

KUNARK HITECH MACHINING & SALES PVT.LTD.



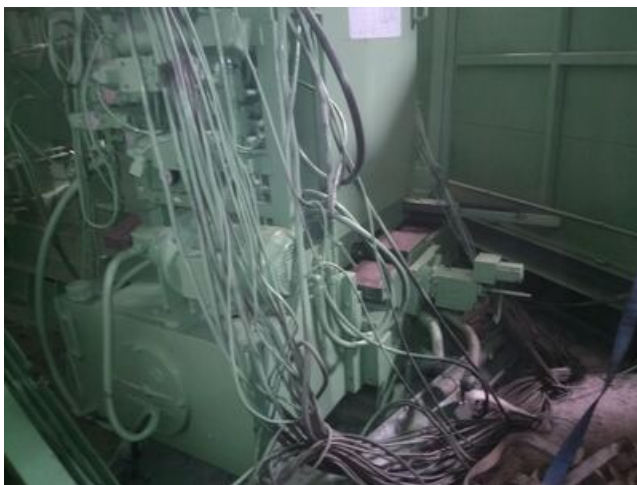
Kunark House, 269, Kunark Marg, Kaman Bhiwandi Road, Kaman,

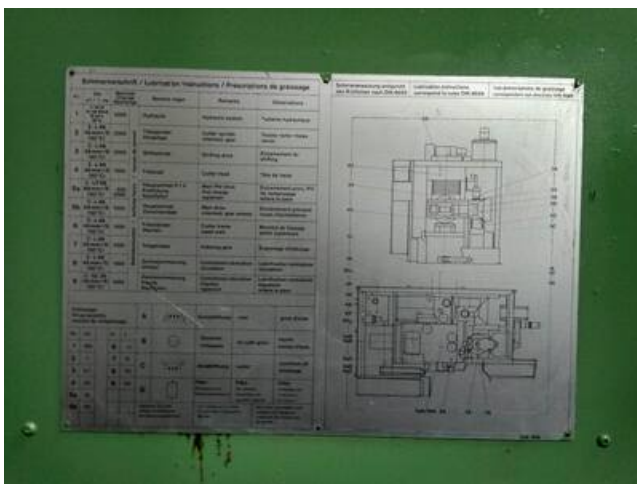
Vasai Road (East), Dist: Thane -401208, Maharashtra, India.

Mobile: (+91) 9867973046 Factory: 0250-6454895

Email: info@jkgears.com, dalbirbright@gmail.com website: www.jkgears.com











Machine Id	:- 1287	Serial No	:-
Category	:- Gear Related Machines	Model	:- WF 280
Country	:- Germany	Make	:- Hurth
Type of Machine	:- Used Gear Hobbing Machine	Year	:- 1985
Weight	:- 0.0	Dimensions	:-
Power	:-	Location	:- Mumbai Warehouse,India

Specification :-

workpiece dia. 280 mm

module 6

The gear hobbing machine HURTH WF 280 is characterized by high productivity, a stationary table, and an operating convenience. Scales are mounted on all movable slides showing each position analog. That abbreviates set up times for repetitive operations. Hydraulic clamping devices for column, head and shift slide provide high hobbing accuracy. When changing the work piece manually or changing the hob cutter, such features grant a considerable time reduction. The electronic distance sensor (Linotast) takes over the exact positioning and constant cutting depth by using a hydro-cylinder with linear amplifier.

work piece

Max. Workpiece –Ø(under specific circumstances)	280 mm (330 mm)
Max. module	6
Max. hob face width for spur gears	250 mm
Min. number of teeth	6
Helix angle = facing head pivoting angle	+50° /- 45°

Working area

Min./max. distance between cutter and table	25 / 260 mm
Cutting depth adjustment with Linotast	0 / 25 mm
Min. /max. distance work piece table –cutting axis	200 / 450 mm
Max. travel of hob slide	250 mm
Min. / max. distance between table and steady	350 / 650 mm
Max. travel of steady	300 mm
Work piece table- Ø	250 mm
Table bore- Ø(Ø x depth)	100 x 315 mm
Max. travel of shifting slide (Z-travel)	170 mm

Tool

Max. cutter- Ø	145 mm
Max. cutter length	220 mm
cutter bore or clamping arbor- Ø	32,40
Taper of cutter spindle	ISA 40
Cutter spindle rpm	31-560 rpm

RPM and Feeds

Max. table rotation 1 step drive	25 rpm
2 step drive	50 rpm
Rapid travel (X-way)	1800 mm / min.
Rapid travel (Y-way)	8100 mm / min.
Feed in Y- direction (with change gears)	0,5 –8,0 mm / WR
Shifting speed in Z-direction	72,5 mm / min.

Electric /Space required/Weight

Power required	28 kW, 380 V 50 Hz
Space required, approx.	4,8 x 3,0 x 2,5 m
Weight of the machine, approx.	9000 kg